

FACT BOOK 2021



株式会社 大真空

Contents



Consolidated balance sheets	1	連結貸借対照表
Consolidated statements of income	3	連結損益計算書
Consolidated statements of comprehensive income	4	連結包括利益計算書
Consolidated statements of cash flows	5	連結キャッシュ・フロー計算書
Sales by application, product and area(Consolidated)	6	販売の状況(連結)
Other information (Consolidated)	7	その他の情報(連結)
Stability/Efficiency	8	安定性/効率性指標
Profitability	9	収益性指標
Per-share data/Common stock price range	10	株式指標/株価

Notes:

- Figures have been calculated on a consolidated basis for the years ended March
- Certain items in previous years' financial statements have been reclassified.
- Taiwan International Financial Reporting Standards was adjusted to the listed companies in Taiwan from the fiscal year ended March 31, 2014. According to the regulation, HARMONY ELECTRONICS CORP. that is our consolidated subsidiary retroactively adjusted it to the financial results ended March 31, 2013.
- Some figures in the fiscal year ended March 31, 2017 were revised because it was discovered error which overseas subsidiary has the less deferred tax assets in the consolidated financial statements of the fiscal year ended March 31, 2017.
- We applied "Partial Amendments to Accounting Standard for Tax Effect Accounting" (Accounting Standards Board of Japan (ASBJ) Statement No.28, February 16, 2018) from the fiscal year ended March 31, 2019. According to the regulation, we retroactively adjusted it to the financial results ended March 31, 2018.

注:

- 記載されている数値は連結ベース。会計年度は4月1日～3月31日です。
- 資料の一部は、組み替え表示しております。
- 2014年3月期より、連結子会社である加高電子股份有限公司の連結財務諸表につき、中華民国国際会計基準を適用したことにより、2013年3月期の数値は遡及修正後の数値を記載しております。
- 2017年3月期において在外子会社の繰延税金資産残高が過少であり、2017年3月期の決算数値金額が誤っていることが判明したため、2017年3月期の数値を一部訂正しております。
- 2019年3月期より、「『税効果会計に係る会計基準』の一部改正」(企業会計基準第28号 2018年2月16日)等を適用したことにより、2018年3月期の数値は遡及修正後の数値を記載しております。

Consolidated balance sheets 連結貸借対照表

Million yen

		'12.3	'13.3	'14.3	'15.3	'16.3	'17.3	'18.3	'19.3	'20.3	'21.3
Assets	資産の部										
Current assets	流動資産	32,498	33,873	32,087	33,515	36,892	36,974	35,507	34,431	38,005	39,937
Cash and deposits	現金及び預金	12,810	13,494	12,033	13,076	18,338	17,203	15,602	13,940	15,321	14,316
Notes and accounts receivable-trade	受取手形及び売掛金	8,680	8,783	7,584	7,231	6,846	7,319	7,059	6,424	8,162	9,318
Electronically recorded monetary claims - operating	電子記録債権	-	-	-	-	42	61	65	49	60	58
Short-term investment securities	有価証券	1,868	1,869	1,870	2,071	2,124	360	829	-	30	-
Merchandise and finished goods	商品及び製品	2,919	2,799	3,057	3,570	2,716	3,145	4,332	5,786	4,531	5,142
Work in process	仕掛品	3,019	3,141	3,551	3,674	3,102	3,074	2,904	3,115	3,932	4,822
Raw materials and supplies	原材料及び貯蔵品	2,073	2,385	2,510	2,543	2,627	3,214	3,438	3,864	4,617	4,824
Deferred tax assets	繰延税金資産	39	198	250	37	65	306	-	-	-	-
Allowance for doubtful accounts	貸倒引当金	-28	-18	-14	-11	-9	-12	-12	-1	-1	-10
Others	その他	1,114	1,218	1,243	1,321	1,039	2,301	1,287	1,252	1,351	1,465
Noncurrent assets	固定資産	25,204	25,176	25,504	23,406	23,534	23,844	23,807	23,999	24,989	28,690
Property, plant and equipment	有形固定資産	23,385	23,135	23,181	20,471	20,276	20,400	20,547	20,793	21,962	23,778
Buildings and structures	建物及び構築物	4,567	5,157	5,882	5,425	4,770	3,734	3,419	3,114	3,032	3,097
Machinery, equipment and vehicles	機械装置及び運搬具	10,654	9,803	9,679	7,657	7,704	8,220	9,114	8,822	8,759	11,347
Tools, furniture and fixtures	工具、器具及び備品	994	995	1,114	938	858	817	878	859	865	879
Land	土地	5,624	5,693	5,737	5,795	5,674	5,704	5,703	5,801	5,771	5,835
Leased assets	リース資産	-	-	-	-	777	704	635	864	724	624
Construction in progress	建設仮勘定	1,545	1,485	766	654	491	1,218	795	1,331	2,808	1,993
Intangible assets	無形固定資産	250	218	261	259	219	168	165	150	140	134
Goodwill	のれん	98	53	22	8	-	-	-	-	-	-
Others	その他	151	165	238	250	219	-	-	-	-	-
Investments and other assets	投資その他の資産	1,568	1,823	2,062	2,675	3,038	3,275	3,094	3,055	2,886	4,777
Investment securities	投資有価証券	1,128	1,410	1,644	2,080	1,687	1,716	1,558	1,521	1,524	2,636
Long-term loans receivable	長期貸付金	7	0	0	0	0	0	0	1	0	1
Retirement benefit asset	退職給付に係る資産	-	-	-	-	-	-	-	-	-	485
Deferred tax assets	繰延税金資産	17	52	41	81	178	340	406	393	400	443
Allowance for doubtful accounts	貸倒引当金	-117	-118	-107	-79	-79	-79	-79	-79	-79	-27
Others	その他	532	478	484	592	1,251	1,298	1,208	1,219	1,040	1,238
Total assets		57,703	59,050	57,592	56,921	60,427	60,819	59,315	58,431	62,995	68,627

Consolidated balance sheets 連結貸借対照表

Million yen

		'12.3	'13.3	'14.3	'15.3	'16.3	'17.3	'18.3	'19.3	'20.3	'21.3
Liabilities	負債の部										
Current liabilities	流動負債	11,822	13,728	12,278	13,569	13,680	13,227	11,204	15,680	16,046	17,069
Notes and accounts payable-trade	支払手形及び買掛金	2,999	2,653	3,108	2,655	2,645	3,224	2,687	2,407	2,776	2,612
Short-term loans payable	短期借入金	2,961	2,530	3,328	3,825	1,788	1,525	1,753	2,675	1,754	2,375
Current portion of long-term loans payable	1年内返済予定の長期借入金	3,762	6,261	3,801	4,546	5,093	5,089	4,111	7,804	7,575	7,976
Lease obligations	リース債務	-	-	-	-	70	68	70	149	570	180
Accounts payable-other	未払金	1,030	779	1,016	1,075	2,707	1,535	1,184	1,258	1,976	1,779
Income taxes payable	未払法人税等	91	327	127	184	191	528	177	240	204	558
Provision for bonuses	賞与引当金	376	498	263	476	471	461	453	239	210	400
Provision for directors' bonuses	役員賞与引当金	-	-	-	-	-	15	-	-	-	-
Others	その他	599	676	633	805	711	779	765	905	978	1,186
Noncurrent liabilities	固定負債	14,359	10,878	8,667	10,896	16,380	16,354	17,230	12,183	16,768	17,788
Long-term loans payable	長期借入金	11,614	8,059	6,050	8,258	12,444	12,851	14,581	9,310	14,457	15,146
Lease obligations	リース債務	-	-	-	-	712	640	570	718	162	459
Deferred tax liabilities	繰延税金負債	442	531	679	822	740	865	681	706	714	958
Provision for retirement benefits	退職給付引当金	1,656	1,847	-	-	-	-	-	-	-	-
Net defined benefit liability	退職給付に係る負債	-	-	1,578	1,493	2,114	1,691	1,101	1,185	1,210	982
Long-term accounts payable-other	長期未払金	522	309	218	161	222	172	165	134	94	105
Others	その他	124	130	141	159	146	132	129	128	129	137
	負債合計	26,182	24,606	20,946	24,465	30,061	29,581	28,434	27,864	32,814	34,858
Net assets	純資産の部										
Shareholders' equity	株主資本										
Capital stock	資本金	19,344	19,344	19,344	19,344	19,344	19,344	19,344	19,344	19,344	19,344
Capital surplus	資本剰余金	12,413	12,413	12,413	12,413	7,158	7,158	7,158	7,158	7,158	7,158
Retained earnings	利益剰余金	-192	878	1,356	-5,309	-19	687	66	-530	-334	686
Treasury stock	自己株式	-1,521	-1,522	-1,532	-1,910	-1,914	-1,917	-1,920	-1,921	-1,924	-1,926
Total shareholders' equity	株主資本合計	30,044	31,113	31,582	24,538	24,570	25,273	24,649	24,051	24,244	25,263
Valuation and translation adjustments	その他の包括利益累計額										
Valuation difference on available-for-sale securities	その他有価証券評価差額金	-59	90	234	526	288	423	375	329	305	953
Deferred gains or losses on hedges	繰延ヘッジ損益	-	-	-	-	-	-	-	-	-46	-104
Foreign currency translation adjustment	為替換算調整勘定	-2,000	-745	232	1,891	1,053	831	751	845	434	1,155
Remeasurements of defined benefit plans	退職給付に係る調整累計額	-	-	235	350	-178	-22	190	263	135	624
Total valuation and translation adjustments	その他の包括利益累計額合計	-2,059	-655	702	2,768	1,164	1,232	1,317	1,437	828	2,629
Non-controlling interests	非支配株主持分	3,536	3,985	4,360	5,148	4,631	4,730	4,913	5,077	5,107	5,876
Total net assets	純資産合計	31,521	34,443	36,646	32,455	30,366	31,237	30,880	30,566	30,180	33,769
Total liabilities and net assets	負債純資産合計	57,703	59,050	57,592	56,921	60,427	60,819	59,315	58,431	62,995	68,627

Consolidated statements of income 連結損益計算書

Million yen

		'12.3	'13.3	'14.3	'15.3	'16.3	'17.3	'18.3	'19.3	'20.3	'21.3
Net sales	売上高	35,150	32,856	33,788	31,076	32,182	30,959	30,298	28,457	29,881	33,189
Cost of sales	売上原価	28,758	26,748	26,736	26,752	25,287	23,450	23,570	22,276	23,443	24,867
Gross profit	売上総利益	6,392	6,108	7,052	4,324	6,894	7,508	6,728	6,181	6,438	8,321
Selling, general and administrative expenses	販売費及び一般管理費	6,075	5,730	6,266	6,611	6,201	6,113	6,427	6,134	6,160	6,232
Operating income	営業利益	316	377	785	-2,286	693	1,395	300	47	277	2,089
Non-operating income	営業外収益	322	1,421	804	1,362	782	619	313	623	492	760
Interest income	受取利息	29	16	26	32	37	46	64	63	53	30
Dividend income	受取配当金	26	25	28	30	43	36	33	38	42	50
Insurance income	受取保険金	68	205	-	-	65	79	67	256	56	54
Subsidy income	補助金収入	83	90	-	-	400	313	-	-	220	63
Foreign exchange gains	為替差益	-	990	530	1,056	-	-	-	124	-	399
Others	その他	115	92	219	242	235	143	148	140	119	161
Non-operating expenses	営業外費用	582	377	271	246	778	463	397	289	425	316
Interest expenses	支払利息	345	294	213	126	164	132	128	127	121	114
Foreign exchange losses	為替差損	83	-	-	-	536	255	127	-	215	-
Compensation expenses	支払補償費	-	-	-	-	-	-	-	88	-	104
Others	その他	153	82	58	119	77	74	141	73	88	98
Ordinary income	経常利益	55	1,420	1,318	-1,170	697	1,551	216	381	344	2,533
Extraordinary income	特別利益	48	33	6	2	18	237	312	5	599	101
Gain on sales of noncurrent assets	固定資産売却益	8	5	3	2	11	67	33	4	201	9
Gain on sales of investment securities	投資有価証券売却益	-	-	-	-	7	45	30	0	94	49
Gain on sale of businesses	事業譲渡益	-	-	-	-	-	-	-	-	302	-
Gain on liquidation of subsidiaries and associates	関係会社清算益	-	-	-	-	-	-	-	-	-	41
Gain on contribution of securities to retirement benefit trust	退職給付信託設定益	-	-	-	-	-	124	248	-	-	-
Others	その他	39	27	2	-	-	-	-	-	-	-
Extraordinary loss	特別損失	151	54	128	4,522	59	595	326	148	55	290
Loss on sales of noncurrent assets	固定資産売却損	3	1	7	37	35	7	13	11	0	0
Loss on retirement of noncurrent assets	固定資産除却損	16	24	43	222	4	19	1	6	2	0
Impairment loss	減損損失	40	-	0	368	12	293	77	13	18	221
Restructuring costs	事業構造改革費用	-	-	-	3,892	-	-	-	-	-	-
Loss on business transfer	事業移管損失	-	-	-	-	-	-	-	116	33	40
Loss on valuation of investment securities	投資有価証券評価損	90	11	-	-	6	-	-	-	-	24
Loss on abandonment of inventories	たな卸資産廃棄損	-	-	-	-	-	218	-	-	-	-
Product compensation expenses	製品補償費用	-	-	-	-	-	-	234	-	-	-
Others	その他	-	15	76	2	-	57	-	-	-	3
Income before income taxes	税金等調整前当期純利益	-47	1,399	1,195	-5,690	656	1,193	203	238	888	2,343
Income taxes - current	法人税、住民税及び事業税	196	412	192	260	278	542	189	302	258	566
Income taxes for prior periods	過年度法人税等	-	-	-	-	36	-	30	-	-	-
Income taxes - deferred	法人税等調整額	-76	-173	26	187	0	-213	67	84	75	94
Profit attributable to non-controlling interests	非支配株主に帰属する当期純利益	81	73	167	207	202	172	214	327	278	459
Profit attributable to owners of parent	親会社株主に帰属する当期純利益	-249	1,086	810	-6,346	139	691	-298	-475	276	1,223

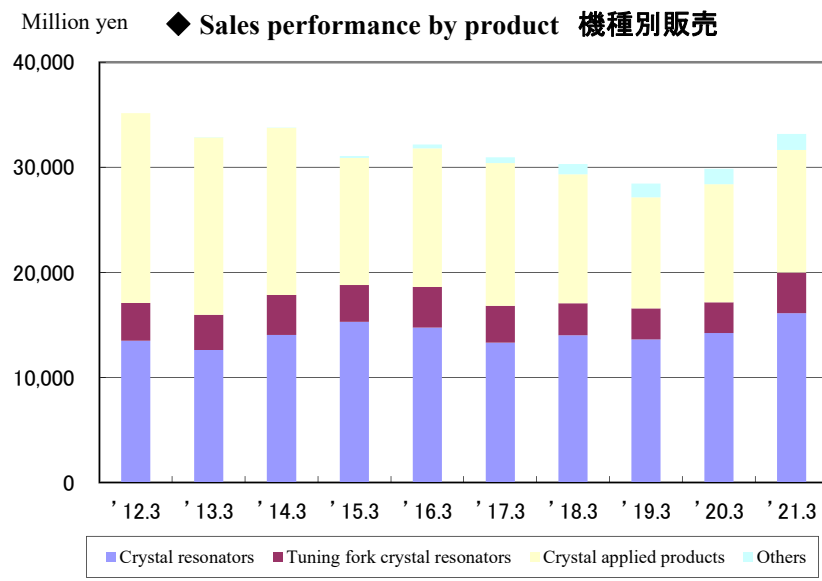
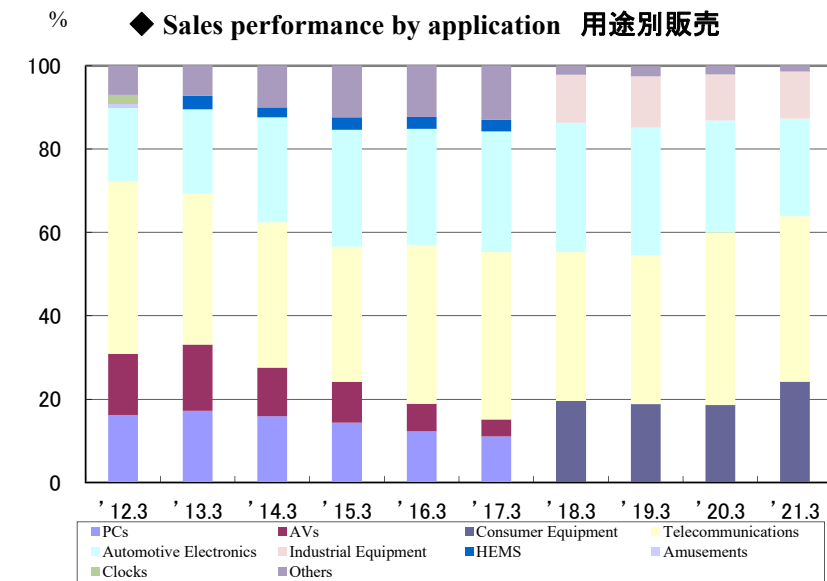
Consolidated statements of comprehensive income 連結包括利益計算書

		Million yen									
		'12.3	'13.3	'14.3	'15.3	'16.3	'17.3	'18.3	'19.3	'20.3	'21.3
Profit	当期純利益	-167	1,160	977	-6,139	341	864	-84	-148	554	1,682
Other comprehensive income	その他の包括利益合計	298	2,087	1,375	2,740	-2,151	119	180	150	-648	2,609
Valuation difference on available-for-sale securities	その他有価証券評価差額金	55	149	144	292	-238	135	-15	-2	115	1,067
Deferred gains or losses on hedges	繰延ヘッジ損益	-	-	-	-	-	-	-	-	-46	-58
Foreign currency translation adjustment	為替換算調整勘定	242	1,938	1,231	2,332	-1,372	-168	-20	75	-580	1,111
Remeasurements of defined benefit plans	退職給付に係る調整額	-	-	-	115	-540	152	216	78	-137	489
Comprehensive income	包括利益	131	3,248	2,353	-3,398	-1,809	983	95	1	-94	4,292
Total comprehensive income attributable to :	(内訳)										
Shareholders of DAISHINKU Corporation	親会社株主に係る包括利益	-33	2,667	1,932	-4,280	-1,464	768	-213	-355	-332	3,023
Comprehensive income attributable to non-controlling interests	非支配株主に係る包括利益	164	580	420	882	-345	215	309	357	238	1,268

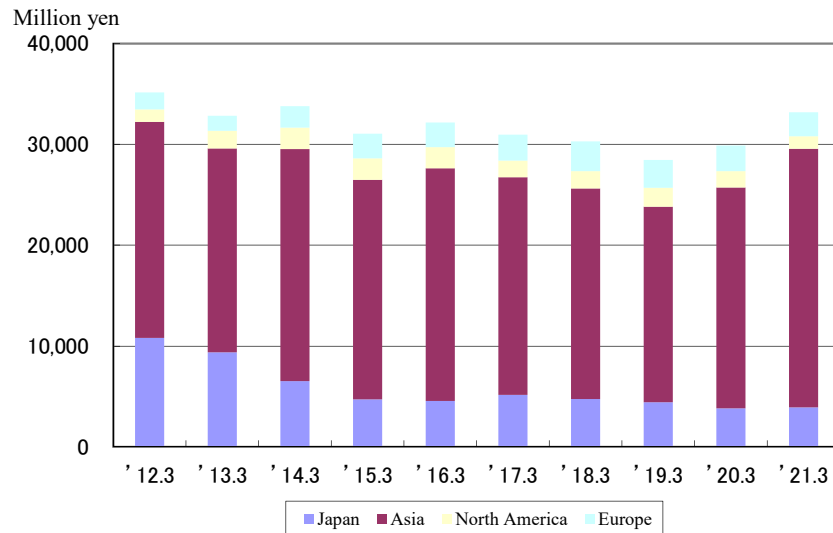
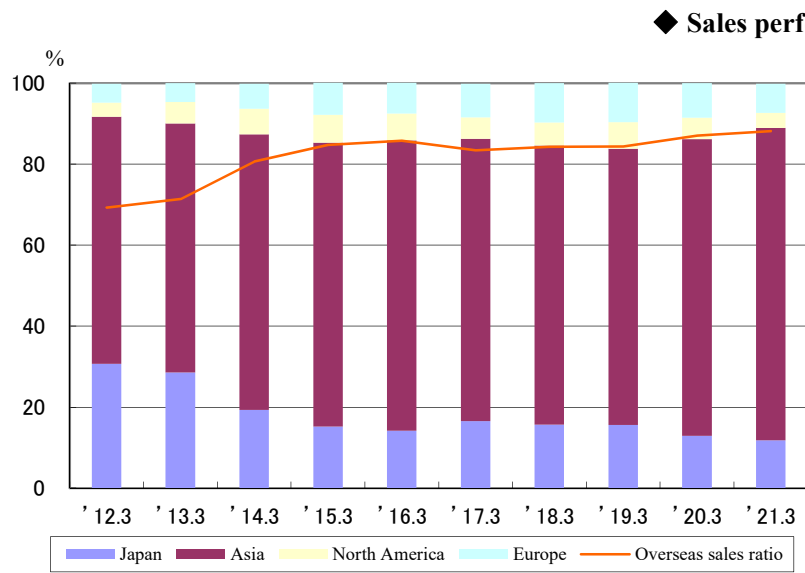
Consolidated statements of cash flows 連結キャッシュ・フロー計算書

		Million yen									
		'12.3	'13.3	'14.3	'15.3	'16.3	'17.3	'18.3	'19.3	'20.3	'21.3
Net cash provided by (used in) operating activities	営業活動キャッシュフロー	5,808	4,768	5,458	1,931	4,847	2,584	849	998	688	2,707
Net cash provided by (used in) investing activities	投資活動キャッシュフロー	-3,483	-2,841	-2,434	-3,664	-2,418	-5,070	-2,925	-1,590	-2,592	-5,388
Net cash provided by (used in) financing activities	財務活動キャッシュフロー	945	-2,408	-4,497	2,098	3,433	-318	501	-1,054	3,586	870
Effect of exchange rate change on cash and cash equivalents	現金及び現金同等物に係る換算差額	88	667	512	877	-600	-301	-169	27	-302	430
Net increase(decrease) in cash and cash equivalents	現金及び現金同等物の増減額	3,359	185	-960	1,243	5,262	-3,106	-1,743	-1,619	1,380	-1,380
Increase in cash and cash equivalents from newly consolidated subsidiary	新規連結に伴う現金及び現金同等物の増加額	3	-	-	-	-	-	-	-	-	-
Effect of changes in the fiscal year-end of consolidated subsidiary	連結子会社の決算期の変更に伴う期首現金及び現金同等物の増減額	-282	-	-	-	-	-	-	-	-	-
Cash and cash equivalents at beginning of period	現金及び現金同等物の期首残高	11,599	14,679	14,864	13,903	15,147	20,410	17,303	15,559	13,940	15,321
Cash and cash equivalents at end of period	現金及び現金同等物の期末残高	14,679	14,864	13,903	15,147	20,410	17,303	15,559	13,940	15,321	13,940

Sales by application, product and area(Consolidated) 販売の状況(連結)



* Changed application category in the fiscal year ended March 2013 and the fiscal year ended March 2018.
 * 2013年3月期および2018年3月期に用途区分を変更。



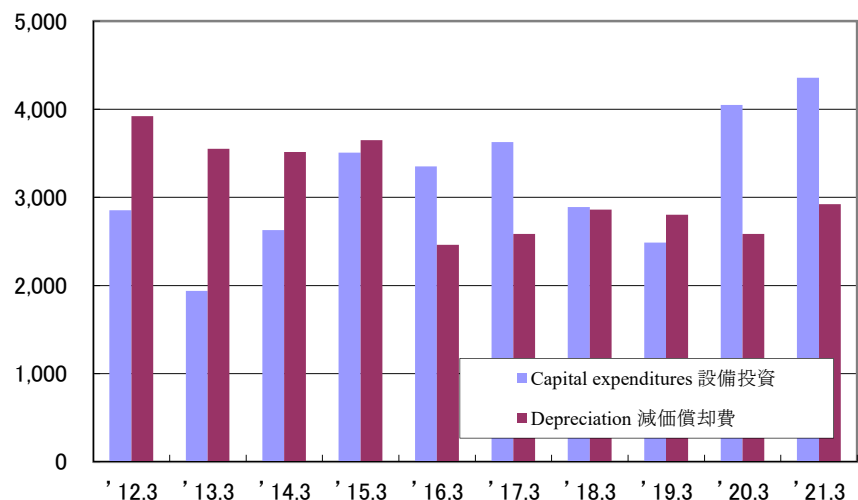
Other information (Consolidated) その他の情報(連結)



		Million yen									
		'12.3	'13.3	'14.3	'15.3	'16.3	'17.3	'18.3	'19.3	'20.3	'21.3
Capital expenditures	設備投資	2,850	1,937	2,625	3,507	3,349	3,624	2,888	2,484	4,047	4,355
Depreciation	減価償却費	3,919	3,550	3,513	3,648	2,459	2,584	2,860	2,801	2,582	2,921
R&D expenses	研究開発費	1,925	1,791	1,912	2,080	1,818	1,739	1,825	1,716	1,907	2,048
R&D expenses to net sales(%)	売上高研究開発費率	5.5	5.5	5.7	6.7	5.6	5.6	6.0	6.0	6.4	6.2
Number of employees	従業員数	4,590	4,455	4,418	4,403	4,379	4,154	4,044	4,040	3,895	3,876

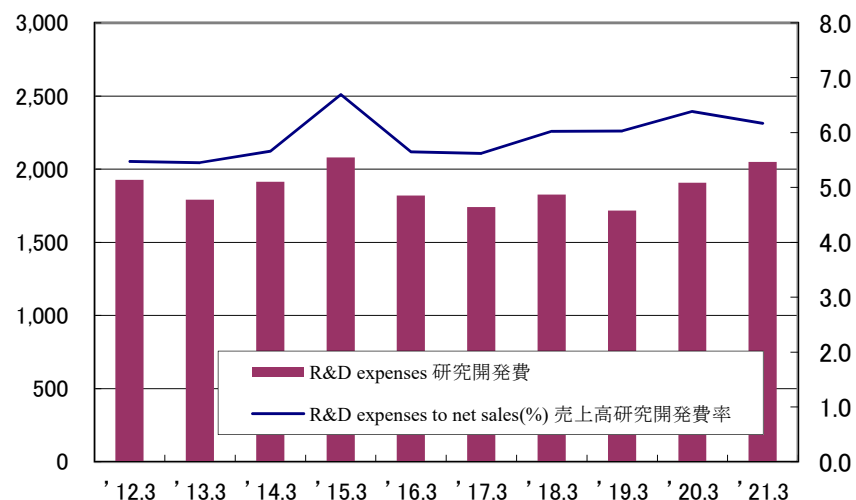
◆ Capital expenditures / Depreciation 設備投資/減価償却費

Million yen



◆ R&D expenses 研究開発費

Million yen



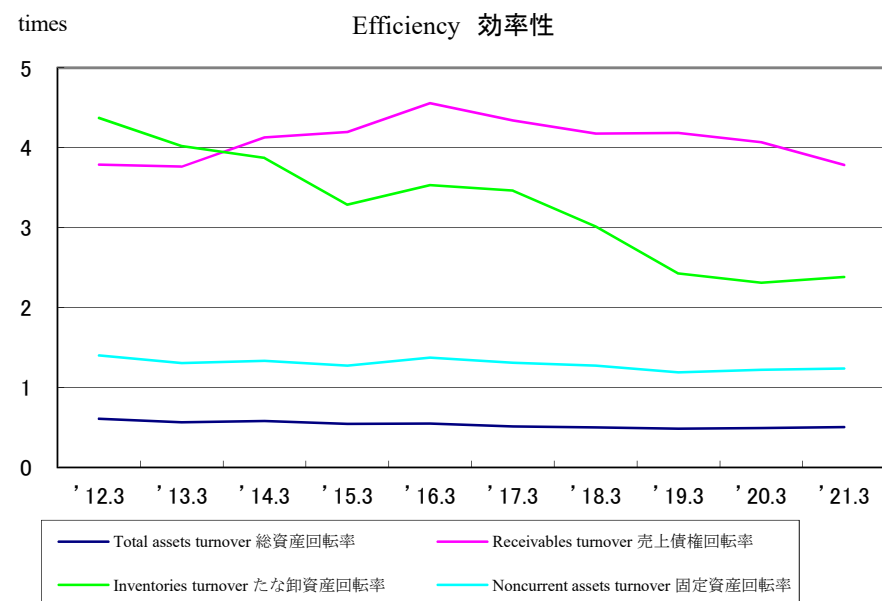
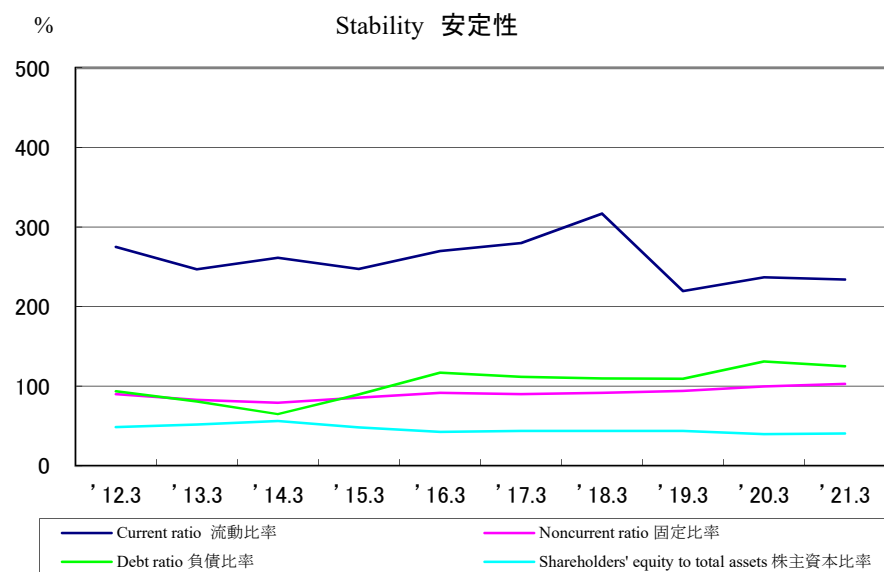
Stability/Efficiency 安定性/効率性指標

◆ Stability 安定性

		'12.3	'13.3	'14.3	'15.3	'16.3	'17.3	'18.3	'19.3	'20.3	'21.3
Current ratio	流動比率	274.9	246.7	261.3	247.0	269.7	279.5	316.9	219.6	236.8	234.0
Noncurrent ratio	固定比率	90.1	82.7	79.0	85.7	91.5	90.0	91.7	94.2	99.7	102.9
Debt ratio	負債比率	93.6	80.8	64.9	89.6	116.8	111.6	109.5	109.3	130.9	125.0
Shareholders' equity to total assets	株主資本比率	48.5	51.6	56.1	48.0	42.6	43.6	43.8	43.6	39.8	40.6

◆ Efficiency 効率性

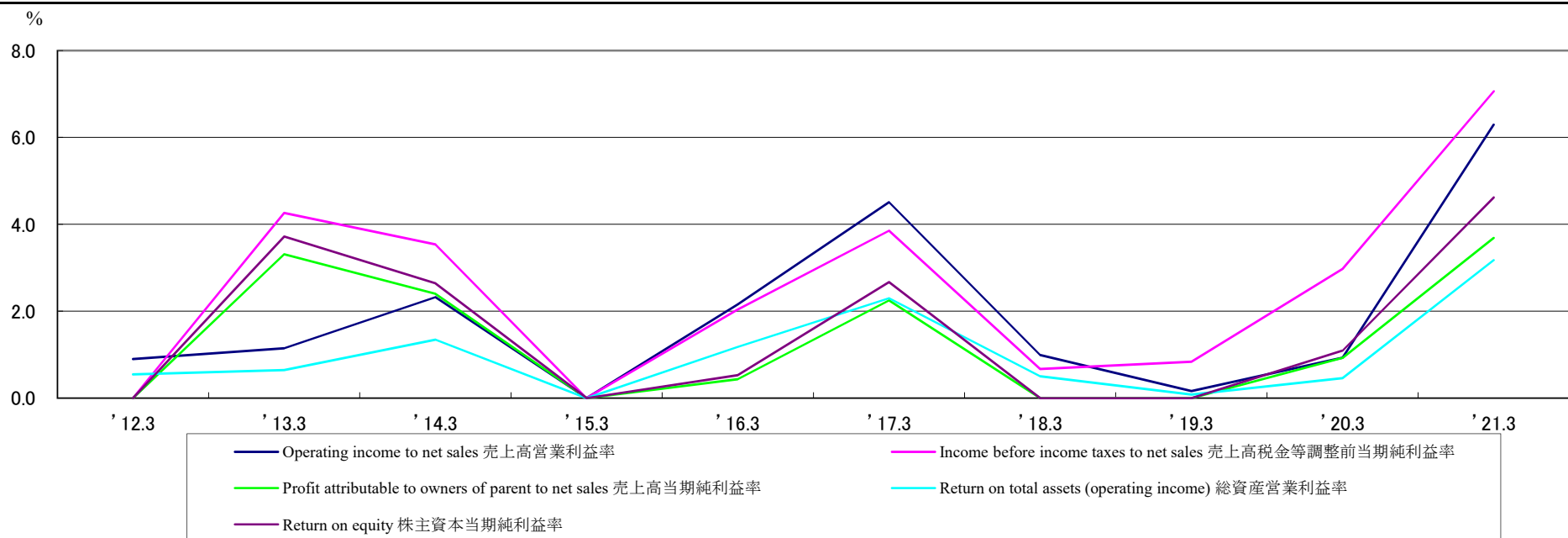
		'12.3	'13.3	'14.3	'15.3	'16.3	'17.3	'18.3	'19.3	'20.3	'21.3
Total assets turnover	総資産回転率	0.6	0.6	0.6	0.5	0.5	0.5	0.5	0.5	0.5	0.5
Receivables turnover	売上債権回転率	3.8	3.8	4.1	4.2	4.6	4.3	4.2	4.2	4.1	3.8
Inventories turnover	たな卸資産回転率	4.4	4.0	3.9	3.3	3.5	3.5	3.0	2.4	2.3	2.4
Noncurrent assets turnover	固定資産回転率	1.4	1.3	1.3	1.3	1.4	1.3	1.3	1.2	1.2	1.2



Profitability 収益性指標



		'12.3	'13.3	'14.3	'15.3	'16.3	'17.3	'18.3	'19.3	'20.3	'21.3
Operating income to net sales	売上高営業利益率	0.9	1.1	2.3	-	2.2	4.5	1.0	0.2	0.9	6.3
Income before income taxes to net sales	売上高税金等調整前当期純利益率	-	4.3	3.5	-	2.0	3.9	0.7	0.8	3.0	7.1
Profit attributable to owners of parent to net sales	売上高当期純利益率	-	3.3	2.4	-	0.4	2.2	-	-	0.9	3.7
Return on total assets (operating income)	総資産営業利益率	0.5	0.6	1.3	-	1.2	2.3	0.5	0.1	0.5	3.2
Return on equity	株主資本当期純利益率	-	3.7	2.6	-	0.5	2.7	-	-	1.1	4.6



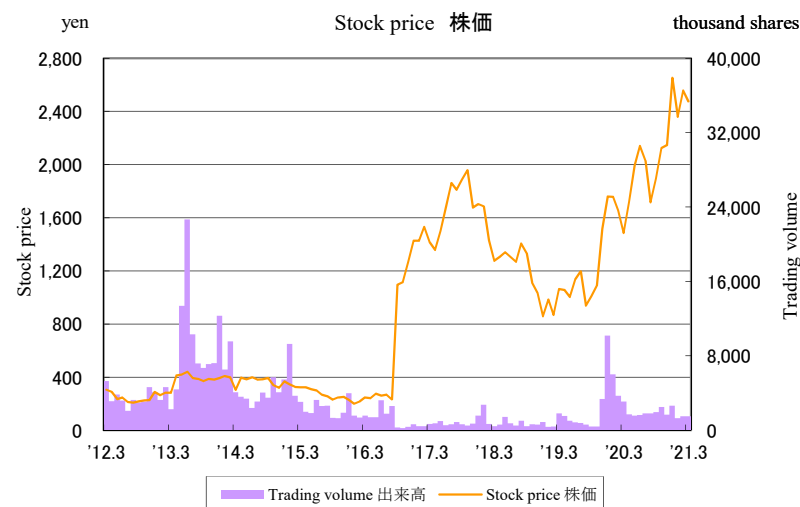
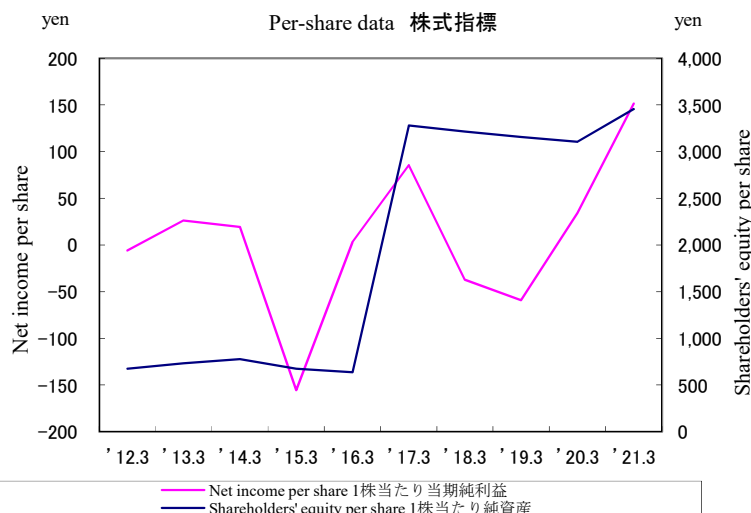
Per-share data/Common stock price range 株式指標/株価

◆ Per-share data 株式指標

		'12.3	'13.3	'14.3	'15.3	'16.3	'17.3	'18.3	'19.3	'20.3	'21.3
Net income per share	1株当たり当期純利益	-6.01	26.21	19.55	-155.44	3.46	85.64 *	-36.93	-58.95	34.23	151.58
Shareholders' equity per share	1株当たり純資産	675.07	734.84	779.38	675.81	637.13	3,282.27 *	3,216.10	3,157.37	3,106.42	3,456.20
Dividends per share	1株当たり配当額	4.0	6.0	9.0	2.0	2.0	- *	20.0	15.0	20.0	35.0

◆ Stock price 株価

		'12.3	'13.3	'14.3	'15.3	'16.3	'17.3	'18.3	'19.3	'20.3	'21.3
High	高値	473	311	496	424	342	1,578 *	1,979	1,580	2,158	2,790
Low	安値	218	195	255	300	168	217 *	1,262	768	899	1,422
Closing price	終値	306	283	306	325	246	1,416 *	1,275	1,065	1,485	2,476
Trading volume(thousand shares)	出来高(千株)	110,276	40,402	111,338	51,250	25,307	13,404 *	11,031	9,477	31,860	21,562



* DAISHINKU CORP. has changed the number of shares constituting one unit from one thousand to one hundred and implemented the share consolidation of common stocks at a ratio of one share per five shares effective as of October 1, 2016. Accordingly, net income per-share and shareholders' equity per share are calculated on the assumption that the share consolidation was implemented at the beginning of the fiscal year ended March 2017. Besides, dividend for the fiscal year ended March 2017 is shown as “—”.

* 当社は2016年10月1日付で単元株式数を1,000株から100株に変更するとともに、普通株式5株につき1株の割合で株式併合を実施しております。2017年3月期の期首に当該株式併合が行われたと仮定し、2017年3月期の1株当たり当期純利益、1株当たり純資産を算定しております。また、1株当たり配当額は中間配当額と期末配当額を単純に合算できないため「-」として記載しております。