


SMD Crystal Resonators / MHz Band Crystal Resonators

DMX-38



Actual size 

■ Features

- A plastic encapsulated surface mount version of the cylindrical type crystal resonator.
- Correspond to automatic mounting and reflow soldering.

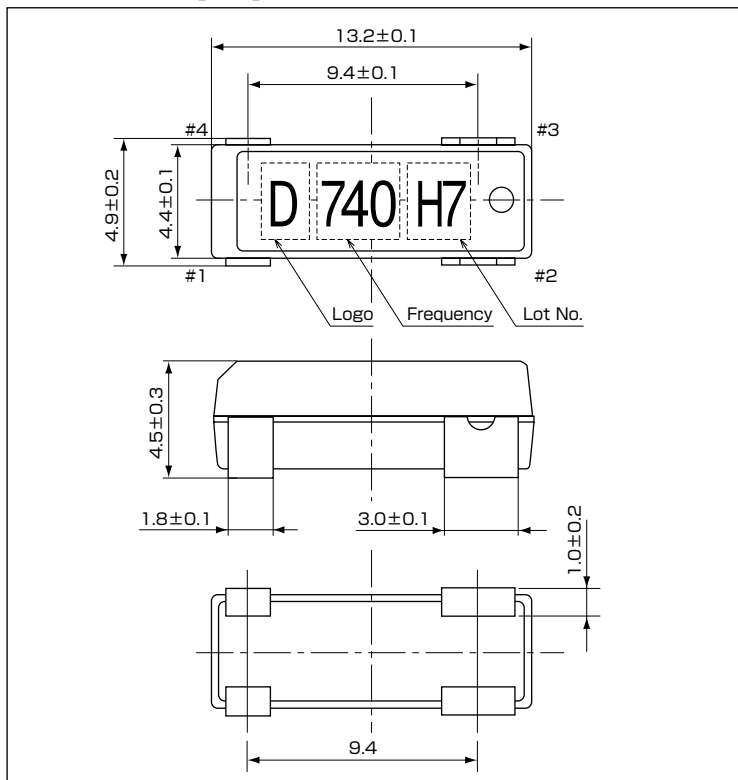


■ Standard Specification

Item	Type	DMX-38
Frequency Range		3.579~28MHz
Overtone Order		Fundamental
Load Capacitance		Series, 8pF, 10pF, 12pF
Drive Level		10μW(300μW max.)
Frequency Tolerance		$\pm 50 \times 10^{-6}$, $\pm 100 \times 10^{-6}$ (at 25°C)
Series Resistance		40~200Ω
Frequency Characteristics over Temperature		$\pm 50 \times 10^{-6}$ / -10~+60°C
		$\pm 100 \times 10^{-6}$ / -30~+80°C
Storage Temperature Range		-40~+85°C
Packing Unit		1000pcs./reel(φ330)

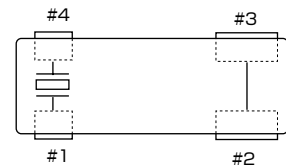
Consult our sales representative for other specifications.

■ Dimensions[mm]



■ Internal Connections

〈Top View〉



- Pin #2 and #3 should be soldered to be electrically OPEN to the PCB.

■ Recommended Land Pattern [mm]

〈Top View〉

